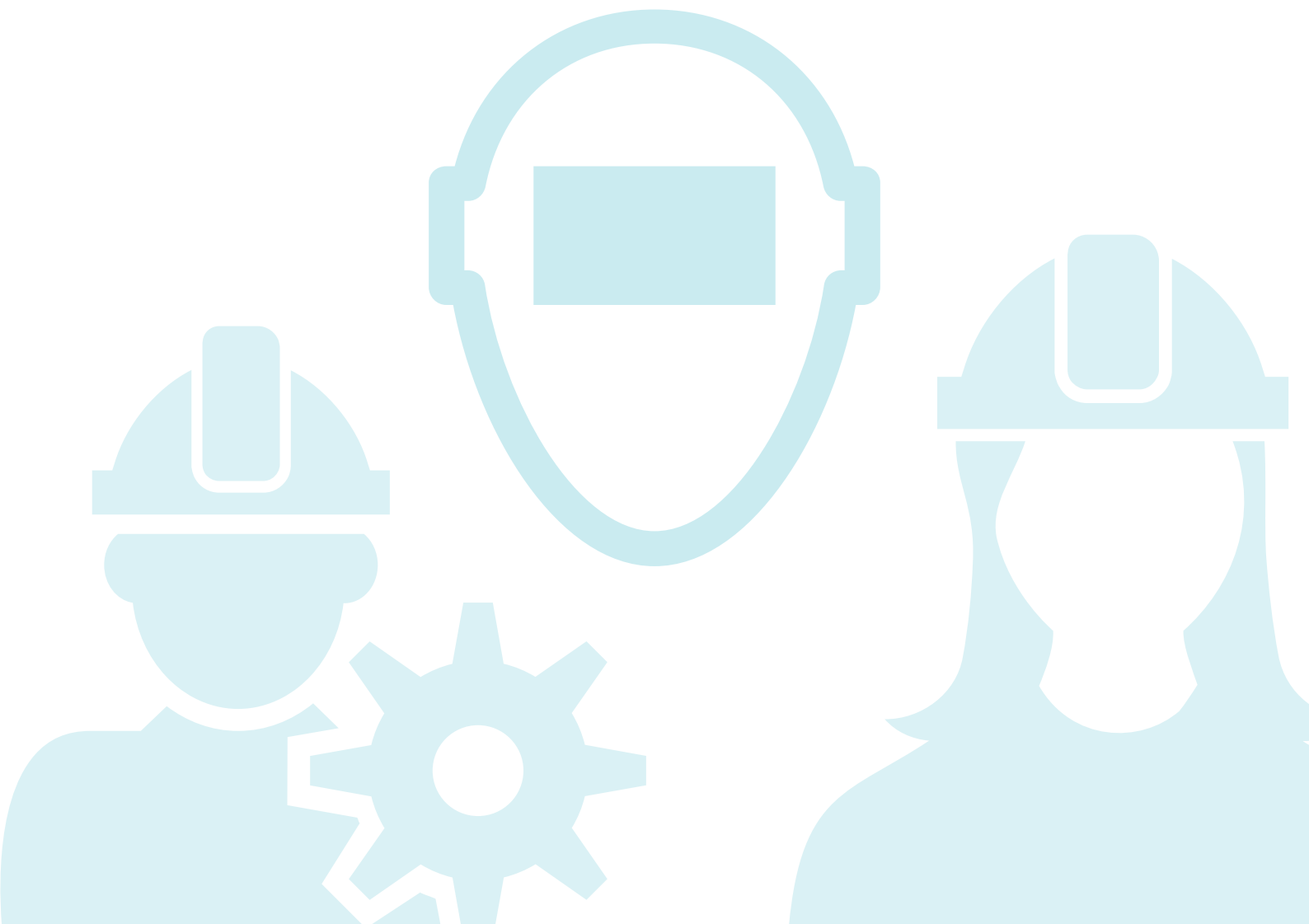


Faster, Smarter, More Efficient: Building Skills for Offsite Construction

Personas

The following personas list all the skills and knowledge needs identified which are applicable to that particular function. They also show training and qualifications available and the gaps in relation to these, as well as the preferred methods of training delivery identified via the research.

They are intended to provide a useful reference for assessing the suitability of training provision and the development of new content that meets the competency requirements.



Digital design

The critical difference between design for traditional construction and design for offsite, is that the latter needs to design specifically for manufacture and subsequent assembly, using appropriate technology and digital skills.



Technical skills



BIM-enabled design
 Creating 3D models
 Developing a value proposition (cost, durability, low carbon, aesthetic)
 Digital design software use e.g. AutoCAD, Revit
 Digital skills (e.g. scheduling and specific IT)
 Generating 2D fabrication drawings and site drawings
 Obtaining prices and dealing with variations
 Producing product/service specifications
 Reading technical drawings
 Risk assessment

Sector specific



House-building regulations and planning



Commercial building regulations and planning

Knowledge



Appreciation of how buildings are constructed
 Current and emerging technologies
 Degrees of tolerance/accuracy
 IT tools
 Lean methodologies
 New technologies e.g. 3D printing
 Order of sequence
 Processes used to assemble buildings
 Quality assurance
 Relevant design codes and standards
 Understanding of full range of materials and products used (weights, volumes, dimensions etc.)
 Understanding of relevant products and systems
 Understanding of the materials being produced and energy efficiency ratings, U-values etc.
 Waste management
 Weight and robustness of materials

Soft Skills



Accuracy
 Attention to detail
 Business case for offsite
 Effective and on-going communication
 Problem-solving
 Team-working
 Working to tight deadlines

Job roles

Skilled worker

3D Visualiser
 CAD Modeller

Supervisor

Architectural Technician
 BIM Technician
 Pre-Construction Designer
 Building Services Engineer

Manager

Electrical Engineer

Senior Manager-Professional

Architect
 Design Engineer
 Structural Engineer

Available qualifications

Modern Methods of Construction (MMC) Level 2 ✓✓✓✓
 HNC/D (e.g. Architectural Technology)
 HNC/FdSc Sustainable Construction & Built Environment
 BIM and Integrated Design ✓✓
 MSc/PgDip/PgCert
 SVQ (e.g. Built Environment Design)
 Modern Apprenticeships (e.g. Timber Manufacture Design)
 Construction Technologies Theory Level 3

Available training

Specialist design software e.g. AutoCAD, Tekla
 BIM training
 Steel Construction Institute courses/webinars in steel design ✓✓

Sector specific

House icon Mitek (or other timber engineering software) ✓✓✓✓

Gaps and issues – training & qualifications

Limited training in design explicitly for manufacture and assembly
 Software training does not typically cater for offsite specifically
 Limited coverage of offsite construction in most degree design courses
 Shortage of tutors able to deliver offsite specific design courses



KEY:



Very little or no content directly aimed at offsite construction



Some content directly aimed at for offsite construction



Good amount of content directly aimed at offsite construction

Preferred training delivery methods

Online



Work-based /on-the-job



Classroom delivery



Blended learning



KEY:



Very few or no employers expressed a preference



Some employers expressed a preference



Most or all employers expressed a preference

Estimating/commercial

Estimating is a crucial element of delivering the fundamental cost savings of offsite (compared with traditional) construction, but is subject to substantial skills shortages.



Technical skills



Analysis of tender documents/contract terms and conditions
 BIM-enabled design
 Costing/developing whole life cycle costs
 Developing sub-contract terms and conditions
 Developing a value proposition (cost, durability, low carbon, aesthetic)
 Developing tenders
 Obtaining prices and dealing with variations
 Planning
 Producing product/service specifications
 Reading technical drawings
 Risk assessment

Sector specific



Differences between Scotland and England for timber frame costing

Knowledge



Appreciation of how buildings are constructed
 Contract law
 Current and emerging technologies
 IT tools
 Lean methodologies
 Quality assurance
 Typical associate costs
 Understanding of full range of materials and products used (weights, volumes, dimensions etc.)
 Waste management

Soft Skills



Accuracy
 Attention to detail
 Business case for offsite
 Commercial awareness
 Effective and on-going communication
 Problem-solving
 Team-working
 Working to tight deadlines

Job roles

Skilled worker

Supervisor

Manager

Contracts Manager
 Commercial Manager
 Risk Manager
 Business Development Manager
 Sales Manager

Senior Manager-Professional

Estimator
 Quantity Surveyor
 Planner

Available qualifications

BSc Quantity Surveying
 BTEC Level 3 Advanced Certificate in Surveying and Estimating
 Level 3 NVQ Diploma in Construction Contracting Operations - Estimating
 Level 6 NVQ Diploma in Construction Contracting Operations Management - Estimating



Available training

Specialist estimating software e.g. Swiftest
 Forecasting tools e.g. spreadsheets



Gaps and issues – training & qualifications

No training readily available to offer 'overview' or introduction to offsite for estimators/commercial roles

Existing training is available in estimating **but does not typically cater for offsite specifically**

Limited coverage of offsite construction in most quantity surveying courses

Shortage of tutors able to deliver offsite specific estimating courses



KEY:



Very little or no content directly aimed at offsite construction



Some content directly aimed at for offsite construction



Good amount of content directly aimed at offsite construction

Preferred training delivery methods

Online



Work-based /on-the-job



Classroom delivery



Blended learning



KEY:



Very few or no employers expressed a preference



Some employers expressed a preference



Most or all employers expressed a preference

Logistics

Logistics in this context spans the product: planning, transportation, scheduling, goods in/goods out, and also supply chain management. This function spans offsite and onsite.



Technical skills



- Budget and financial management
- Control and management of inventory
- Digital skills (e.g. scheduling and specific IT)
- Health & safety
- Lifting and handling
- Planning
- Process management
- Project management
- Quality control
- Reading technical drawings
- Risk assessment
- Supply chain management ("re-engineering the supply chain")
- Time management
- Working at heights

Sector specific



Potential issues for education and healthcare deliveries to site, notably to minimise disruption

Knowledge



- Appreciation of how buildings are constructed
- Degrees of tolerance/accuracy
- Integrating onsite and offsite IT tools
- Lean methodologies
- Low carbon agenda
- Offsite manufacturing processes
- Order of sequence
- Processes used to assemble buildings
- Quality assurance
- Safe lifting and handling
- Scheduling
- Site specifics
- Understanding of the materials being produced and energy efficiency ratings, U-values etc.
- Waste management
- Weight and robustness of materials

Soft Skills



- Accuracy
- Attention to detail
- Business case for offsite
- Commercial awareness
- Customer service
- Effective and on-going communication
- Negotiation
- Problem-solving
- Process improvement
- Team-working
- Working to tight deadlines

Job roles

Skilled worker

- Administrator
- Banksman/Signaller

Supervisor

- Dispatch Leader
- Crane Specialist
- Plant Support Services Coordinator
- Site Supervisor

Manager

- Logistics/Plant Manager
- Dispatch Manager
- Transport Manager
- Construction Manager
- Sales Manager
- HR/Training Manager

Senior Manager-Professional

Available qualifications

- Level 2 NVQ Diploma in Site Logistics Operations (Construction)
- BSc Logistics Management
- NVQ/SVQ level 2 (Slinging and Signalling, Plant Operations)
- Level 4 NVQ Diploma in Controlling Lifting Operations



Available training

- Use of specific planning software/other tools] ✓✓
- Security Industry Authority (SIA) licence] ✓

Gaps and issues – training & qualifications

Existing training is available in logistics **but does not typically cater for offsite specifically or illustrate differences between on and offsite logistics**

No training readily available to offer 'overview' or introduction to offsite for logistics function

Shortage of tutors that would be able to deliver offsite specific training



KEY:



Very little or no content directly aimed at offsite construction



Some content directly aimed at for offsite construction



Good amount of content directly aimed at offsite construction

Preferred training delivery methods

Online



Work-based /on-the-job



Classroom delivery



Blended learning



KEY:



Very few or no employers expressed a preference



Some employers expressed a preference



Most or all employers expressed a preference

Offsite manufacture

Offsite manufacture refers to the creation of components, modules or entire buildings that are subsequently taken to, and assembled/installed onsite.



Technical skills



- BIM-enabled design
- Health & safety
- Relevant trade skills (joinery, plastering, operating site machinery, welding)
- Lifting and handling
- Machine plant operation
- Measuring to precise specifications
- Multiskilling (e.g. combination of various technical skills)
- Process management
- Project management
- Quality control
- Reading technical drawings
- Risk assessment
- Supply chain management ("re-engineering the supply chain")
- Time management
- Use of hand tools
- Working at heights

Knowledge



- Appreciation of how buildings are constructed
- Basic design
- Degrees of tolerance/accuracy
- Impacts for site if manufacture is at fault
- Lean methodologies
- New technologies e.g. 3D printing
- Offsite manufacturing processes
- Order of sequence
- Processes used to assemble buildings
- Quality assurance
- Relevant design codes and standards
- Safe lifting and handling
- Scheduling
- Understanding of full range of materials and products used (weights, volumes, dimensions etc.)
- Understanding of relevant products and systems
- Waste management
- Weight and robustness of materials

Soft Skills



- Accuracy
- Adaptability
- Attention to detail
- Effective and on-going communication
- Problem-solving
- Process improvement
- Team-working
- Working to tight deadlines

Job roles

Skilled worker

Wood Machinist, Multi-Skilled Operative, Steel Fixer, Welding Fabricator, Trades: Joiner; Kitchen Fitter, Forklift driver
Trades: Plumber; Electrician; Painter & Decorator; Floorlayer/Tiler; Cavity Insulation Installer

Supervisor

Factory Supervisor

Manager

Project Manager
Factory Manager
Plant Manager

Senior Manager-Professional

Available qualifications

- Modern Methods of Construction (MMC) level 2
- NVQ in Modular Construction level 2
- Level 2 NVQ Diploma in Innovative/MMC - Modular/Portable Buildings
- Steel frame assembly/construction
- Trailblazer Construction Assembly Technician (multi-skilled)
- Scottish Modern Apprenticeship - Timber Frame Manufacture
- Level 3 Diploma Engineering Technical Certification
- Level 3 NVQ Diploma Engineering Technical Support



Available training

- Modular and portable building association in-company training (bespoke)
- Timber Frame Competency Award Scheme (Structural Timber Association)
- Scottish Adult Upskilling Programme - Timber Frame Manufacturing
- Steel Construction Institute (SCI) courses and webinars



Gaps and issues – training & qualifications

- Offsite manufacture specific training (e.g. specific to a material or product such as steel, some of which is developed by federations) not taken up/offered by providers who cannot get funding to run these courses
- Traditional training in 'silos' not multi-skilling
- Employers largely unaware of relevant training that exists
- Difficult for employers to release operatives for training; preference for On-site Assessment and Training (OSAT)
- Shortage of assessors and tutors

KEY:

✓ Very little or no content directly aimed at offsite construction
 ✓✓ Some content directly aimed at for offsite construction
 ✓✓✓ Good amount of content directly aimed at offsite construction

Preferred training delivery methods

Online



Work-based /on-the-job



Classroom delivery



Blended learning



KEY:

● Very few or no employers expressed a preference
 ●● Some employers expressed a preference
 ●●● Most or all employers expressed a preference

Onsite placement and assembly

Onsite construction requires precise, accurate placement of components, modules and buildings prior to full assembly. This level of precision is the nucleus of a successful project.



Technical skills



Health & safety
 Relevant trade skills (joinery, plastering, operating site machinery, welding)
 Laying groundworks
 Lifting and handling
 Machine plant operation
 Measuring to precise specifications
 Multiskilling (e.g. combination of various technical skills)
 Process management
 Project management
 Quality control
 Reading technical drawings
 Risk assessment
 Time management
 Use of hand tools
 Working at heights

Sector specific



House-building regulations and planning



Commercial building regulations and planning

Knowledge



Degrees of tolerance/accuracy
 Impacts for site if manufacture is at fault
 Integrating onsite and offsite
 Lean methodologies
 Order of sequence
 Processes used to assemble buildings
 Quality assurance
 Safe lifting and handling
 Scheduling
 Site specifics
 Understanding of full range of materials and products used (weights, volumes, dimensions etc.)
 Waste management
 Weight and robustness of materials

Soft Skills



Accuracy
 Adaptability
 Attention to detail
 Effective and on-going communication
 Negotiation
 Problem-solving
 Process improvement
 Team-working
 Working to tight deadlines

Job roles

Skilled worker

Assembly Technician Erectors:
 Steel; Precast Concrete Operatives:
 Groundworks; Roofing, Banksman/
 Signaller, Crane Operator, Forklift
 Driver Trades: Plumber, Electrician,
 Painter/Decorator, Joiner
 Tunnelling Operative

Supervisor

Chargehand
 Site supervisor

Manager

Project Manager
 Site Manager
 Site Inspector

Senior Manager- Professional

Available qualifications

Modern Methods of Construction (MMC) level 2
 NVQ in Modular Construction level 2
 Level 2 NVQ Diploma in Innovative/MMC –
 Modular/Portable Buildings
 Innovative Modern Methods of Construction
 (Construction): Steel frame assembly/construction
 NVQ/SVQ level for traditional trades e.g. joinery,
 plastering



Available training

Modular and portable building association
 in-company training (bespoke)
 Required training for traditional trades:
 health and safety, working at heights etc.
 (can be part of qualification)



Gaps and issues – training & qualifications

Offsite is not typically covered in traditional trade training
 Traditional training in 'silos' not multi-skilling
 Employers largely unaware of relevant qualifications such as the NVQ in Modular Construction
 Shortage of assessors and tutors

KEY:



Very little or no content directly aimed at offsite construction



Some content directly aimed at for offsite construction



Good amount of content directly aimed at offsite construction

Preferred training delivery methods

Online



Work-based /on-the-job



Classroom delivery



Blended learning



KEY:



Very few or no employers expressed a preference



Some employers expressed a preference



Most or all employers expressed a preference

Site management and integration

Offsite construction site management hinges on being able to integrate the offsite and onsite functions, which requires a comprehensive understanding of both aspects.



Technical skills



Budget and financial management
 Digital skills (e.g. scheduling and specific IT)
 Health & safety
 Information management (project delivery and design management)
 Measuring to precise specifications
 Multiskilling (e.g. combination of various technical skills)
 Process management
 Project management
 Quality control
 Reading technical drawings
 Risk assessment
 Supply chain management ("re-engineering the supply chain")
 Time management

Sector specific



House-building regulations and planning



Commercial building regulations and planning

Knowledge



Degrees of tolerance/accuracy
 Impacts for site if manufacture is at fault
 Integrating onsite and offsite
 IT tools
 Lean methodologies
 Order of sequence
 Processes used to assemble buildings
 Quality assurance
 Safe lifting and handling
 Scheduling
 Site specifics
 Understanding of relevant products and systems
 Waste management
 Weight and robustness of materials

Soft Skills



Accuracy
 Adaptability
 Attention to detail
 Effective and on-going communication
 Negotiation
 Problem-solving
 Process improvement
 Team-working
 Working to tight deadlines

Job roles

Skilled worker

Supervisor

Manager

Site Manager
 Project Manager
 Construction Manager
 Logistics Manager
 Compliance Manager

Senior Manager-Professional

Site Inspector

Available qualifications

Modern Methods of Construction (MMC) level 2
 NVQ in Modular Construction level 2
 Level 2 NVQ Diploma in Innovative/MMC - Modular/Portable Buildings
 Construction Project Management - MSc
 HNC in Construction & Built Environment
 HNC in Building Studies



Available training

Modular and portable building association
 in-company training (bespoke)
 Required training for traditional trades: health and safety, working at heights etc. (can be part of qualification)
 Site safety management



Gaps and issues – training & qualifications

Construction project management MSc includes one module on 'innovation in construction' i.e. not explicitly covering offsite construction
 Onsite behaviours and attitudes (e.g. collaborative approach) are not included in traditional training
 Generic project management qualifications do not have substantial coverage of offsite
 Shortage of assessors and tutors

KEY:



Very little or no content directly aimed at offsite construction



Some content directly aimed at for offsite construction



Good amount of content directly aimed at offsite construction

Preferred training delivery methods

Online



Work-based /on-the-job



Classroom delivery



Blended learning



KEY:



Very few or no employers expressed a preference



Some employers expressed a preference



Most or all employers expressed a preference