

# Construction in the Greater Cambridge and Greater Peterborough LEP area

Helping you to achieve growth



# Construction helps you to achieve economic growth

The construction industry accounts for **8% of United Kingdom Gross Domestic Product (GDP)** and has a workforce of **2.6 million**. The industry generates a **return of £2.84** to the economy for every pound of investment.

## The role of construction

The construction industry plays a leading role in delivering economic growth. The industry is essential in meeting the economic and social challenges that Local Enterprise Partnerships (LEPs) face across the infrastructure, housing, repair and maintenance, industrial and commercial sectors.

Whether you are working to meet your area's housing needs or to deliver iconic infrastructure, **we can help you to plan and maximise your skills outcomes through construction.**



We want to help you **use construction to drive long-term growth and jobs** across the Greater Cambridge and Greater Peterborough LEP area and your priority sectors. We work with LEPs and bring together industry to find solutions to address the current and future skills needs of construction businesses in the LEP area.

With the economy now strong and continuing to grow, the UK construction industry needs to attract 43,000 new recruits every year for the next five years to meet the increased demand for skills and to replace those leaving the sector. We will continue to work with your LEP and local partners to support and bring growth to the Greater Cambridge and Greater Peterborough LEP area through the development of employment and skills in local construction businesses.

## Who we are

CITB is the Construction Industry Training Board. We work with the construction industry to reduce skills gaps, train the workforce and inspire the next generation of people to work in the industry.

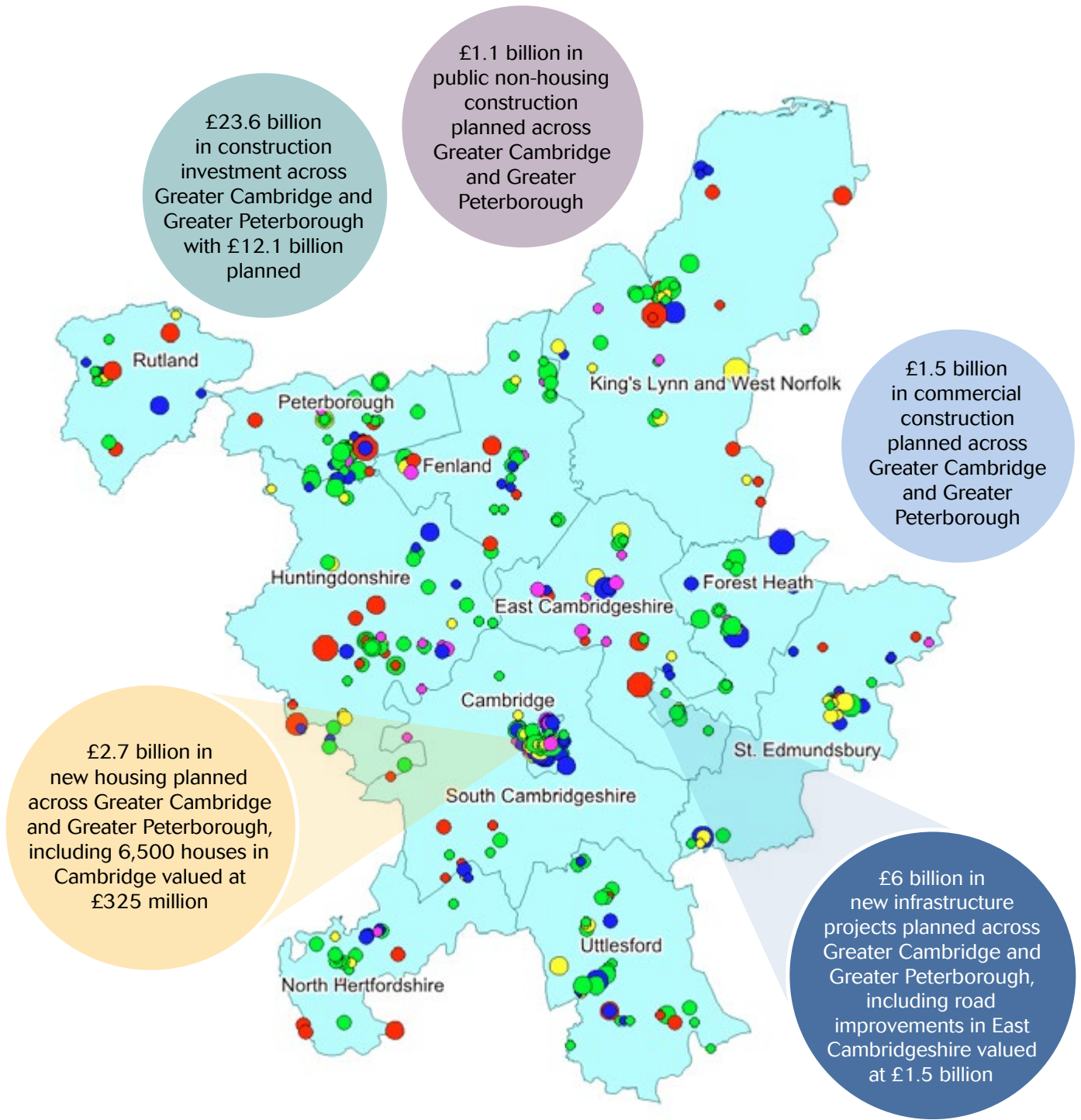


If you want to deliver growth in your area, we can help, contact **Jeremy Wright, Partnership Manager** on **07787 697785** or **[jeremy.wright@citb.co.uk](mailto:jeremy.wright@citb.co.uk)**





**In the Greater Cambridge and Greater Peterborough LEP area, there are 7,185 construction businesses and 35,200 construction jobs.**



**Planned projects by sector**

- Infrastructure
- Private commercial
- Private non-housing
- New housing
- Private industrial

**Planned projects by value (£ million)**

- >100
- 50 to 100
- 10 to 50
- 2 to 10
- <2

# “Working with CITB will help us achieve our goal of ensuring that Essex has a world-class skills system”

## CITB has begun work on a Construction Skills Strategy for Essex.

The strategy will be jointly ‘designed, invested and delivered’ by CITB and Essex Employment and Skills Board (ESB). The strategy will assess the demand for construction skills in the county. It will also look at the ‘pipeline of supply’ of skills in Essex and include input from local employers and stakeholders. An action plan will be included to ensure the strategy drives through appropriate improvement.

Commenting on the strategy, an ESB Spokesperson said: “The ESB works extremely hard to engage with employers in order to help tackle their skills challenges.

“Our partnership with CITB in this regard is invaluable. Without collaboration with CITB our work would not have had the reach or impact that we had hoped for. CITB’s insight, connections and support have helped more voices to be heard, allowing for better informed solutions to be developed.

“We know there is still much for us to do, but we believe working in partnership with CITB will help us achieve our goal of ensuring that Essex has a world-class skills system.”



As part of their work on the strategy, ESB has been collaborating with CITB’s Strategic Partnerships and Research teams, utilising the Labour Forecasting Tool, the CREST Awards for Construction and CITB’s experience of strategy development.

A bespoke research report highlighting the supply and demand challenges in the county has been provided to Essex ESB by CITB.

A stakeholder consultation throughout the county was also submitted. This included an online survey and two workshops to seek stakeholder views on how ESB and CITB can work collaboratively to design and deliver the appropriate strategy.

Essex ESB is organising three events in May that will focus on careers in construction followed by a week-long event in August 2016.

### Contact

Please contact Jeremy Wright on 07787 697785 or [jeremy.wright@citb.co.uk](mailto:jeremy.wright@citb.co.uk) to arrange a meeting to discuss how we can work with your LEP or local authority.

### Useful links

[citb.co.uk](http://citb.co.uk)  
[citb.co.uk/csn](http://citb.co.uk/csn)  
[citb.co.uk/funding](http://citb.co.uk/funding)  
[goconstruct.org](http://goconstruct.org)

### Follow us on

 Twitter  
[@CITB\\_UK](https://twitter.com/CITB_UK)  
 Facebook  
[facebook.com/citb.uk](https://facebook.com/citb.uk)  
 LinkedIn  
[linkedin.com/company/citb](https://linkedin.com/company/citb)