

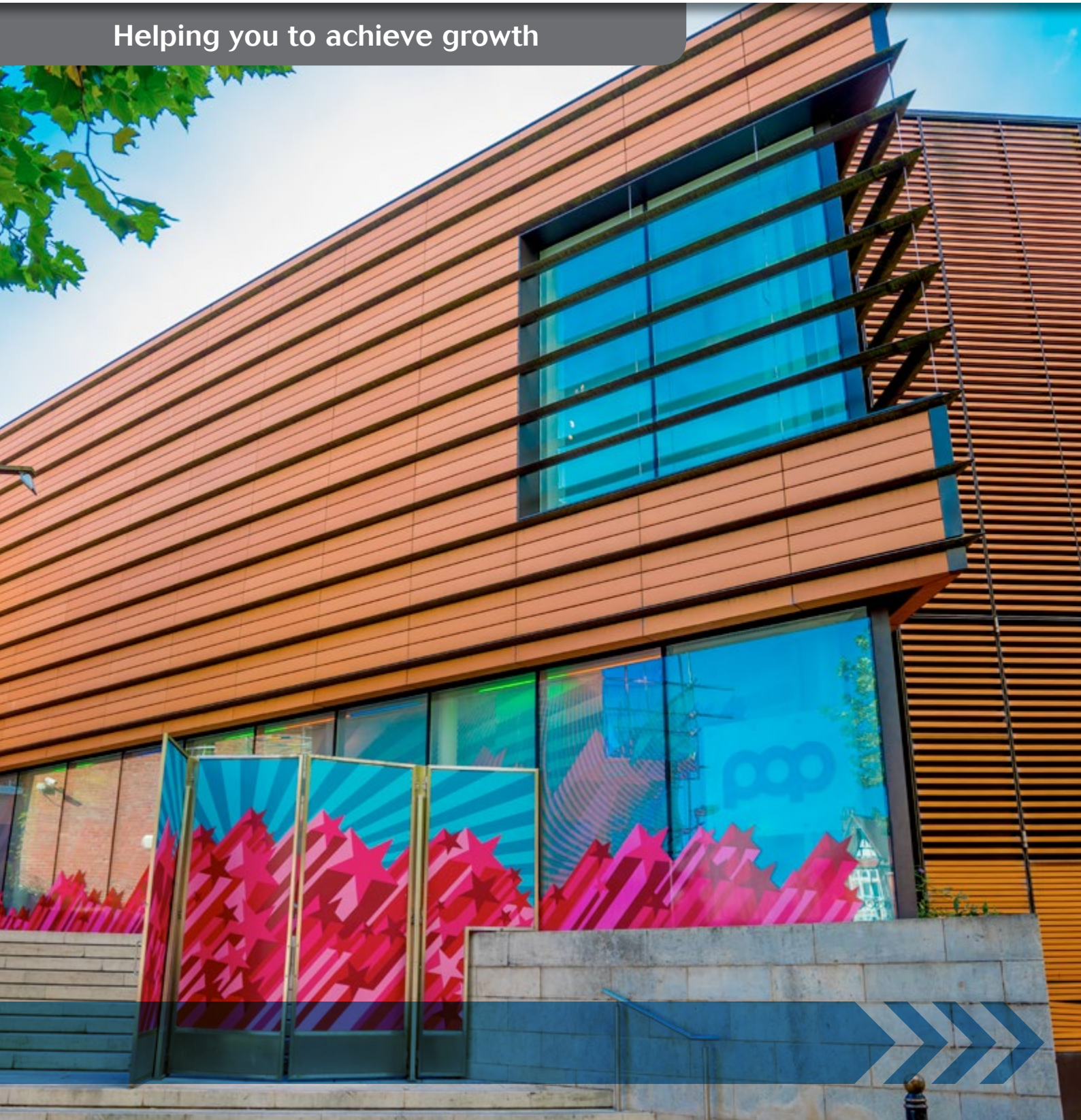
2016

citb.co.uk



Construction in the Black Country LEP area

Helping you to achieve growth



Construction helps you to achieve economic growth

The construction industry accounts for **8% of United Kingdom Gross Domestic Product (GDP)** and has a workforce of **2.6 million**. The industry generates a **return of £2.84** to the economy for every pound of investment.

The role of construction

The construction industry plays a leading role in delivering economic growth. The industry is essential in meeting the economic and social challenges that Local Enterprise Partnerships (LEPs) face across the infrastructure, housing, repair and maintenance, industrial and commercial sectors.

Whether you are working to meet your area's housing needs or to deliver iconic infrastructure, **we can help you to plan and maximise your skills outcomes through construction.**



We want to help you **use construction to drive long-term growth and jobs** across the Black Country LEP area and your priority sectors. We work with LEPs and bring together industry to find solutions to address the current and future skills needs of construction businesses in the LEP area.

With the economy now strong and continuing to grow, the UK construction industry needs to attract 43,000 new recruits every year for the next five years to meet the increased demand for skills and to replace those leaving the sector. We will continue to work with your LEP and local partners to support and bring growth to the Black Country LEP area through the development of employment and skills in local construction businesses.

Who we are

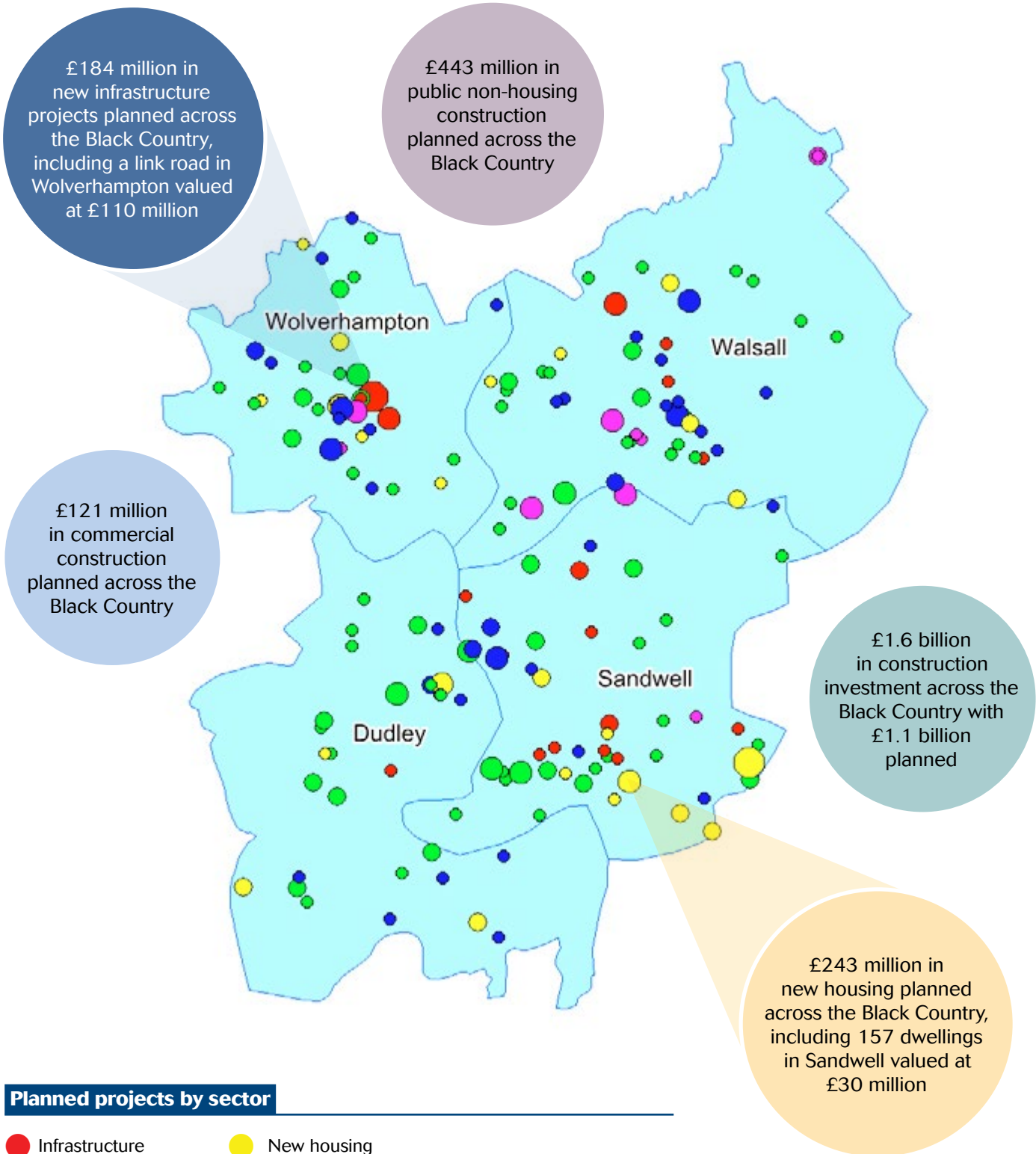
CITB is the Construction Industry Training Board. We work with the construction industry to reduce skills gaps, train the workforce and inspire the next generation of people to work in the industry.



If you want to deliver growth in your area, we can help, contact Lorraine Gregory, Partnership Manager on **07500 105703** or **lorraine.gregory@citb.co.uk**



In the Black Country LEP area, there are 3,750 construction businesses and 36,500 construction jobs.



Planned projects by sector

- Infrastructure
- Private commercial
- Private non-housing
- New housing
- Private industrial

Planned projects by value (£ million)

- >100
- 50 to 100
- 10 to 50
- 2 to 10
- <2

CITB's Client Based Approach embedded in Midlands Highways Alliance's work

The Midlands Highways Alliance (MHA) was awarded National Skills Academy for Construction (NSAfc) status by CITB in February 2015.

Since gaining NSAfc status the MHA, a partnership that promotes excellence in the delivery of highway services, has been developing employment and skills opportunities that support growth in the local construction sector.

The MHA has done this through CITB's Client Based Approach (CBA), by embedding CITB learning, employment and skills planning into their frameworks. In doing so the MHA has achieved outcomes in these fields across all their contracts.

Formed in July 2007 the MHA was the first partnership of its kind in the UK. Seen as an exemplar by the National Audit Office in 2010,



the MHA is now being used as the model for regional alliances being set up across the country.

The MHA recognises the value in collaborative working between authorities, the whole of the highway sector and CITB. It looks to develop close relationships with contractors and suppliers.

Leicestershire County Council acts as the host authority for the alliance providing financial management support, communications support and by employing four MHA staff: an alliance manager, a framework manager, a skills community manager and a support assistant.

In 2015, six contractors were awarded places on an expanded MHA framework contract estimated to be worth at least £250 million over four years.

Commenting on CITB's work with MHA, Meg Hankinson, CITB Advisor Derby, Derbyshire, Nottingham and Nottinghamshire, said: "Working with MHA and its range of contractors is enabling CITB to better understand the challenges and skills-needs for this important sector and then to collaborate on responses received.



"We are seeing great results from the contractors themselves and their work with their supply chains; some are working with companies within their individual supply chains, talking with each other in order to support and not overburden them with work.

"CITB's relationship with MHA can only mature. We hope that this partnership will create new opportunities to share, along with initiatives to support the sector."

For more information on the Midlands Highway Alliance please visit: mhaweb.org.uk

Contact

Please contact Lorraine Gregory on 07500 105703 or lorraine.gregory@citb.co.uk to arrange a meeting to discuss how we can work with your LEP or local authority.

Useful links

citb.co.uk
citb.co.uk/csn
citb.co.uk/funding
goconstruct.org

Follow us on

 Twitter
[@CITB_UK](https://twitter.com/CITB_UK)
 Facebook
facebook.com/citb.uk
 LinkedIn
linkedin.com/company/citb