

Construction in the D2N2 LEP area

Helping you to achieve growth



Construction helps you to achieve economic growth

The construction industry accounts for **8% of United Kingdom Gross Domestic Product (GDP)** and has a workforce of **2.6 million**. The industry generates a **return of £2.84** to the economy for every pound of investment.

The role of construction

The construction industry plays a leading role in delivering economic growth. The industry is essential in meeting the economic and social challenges that Local Enterprise Partnerships (LEPs) face across the infrastructure, housing, repair and maintenance, industrial and commercial sectors.

Whether you are working to meet your area's housing needs or to deliver iconic infrastructure, **we can help you to plan and maximise your skills outcomes through construction.**



We want to help you **use construction to drive long-term growth and jobs** across the Derby, Derbyshire, Nottingham and Nottinghamshire (D2N2) LEP area and your priority sectors. We work with LEPs and bring together industry to find solutions to address the current and future skills needs of construction businesses in the LEP area.

With the economy now strong and continuing to grow, the UK construction industry needs to attract 43,000 new recruits every year for the next five years to meet the increased demand for skills and to replace those leaving the sector. We will continue to work with your LEP and local partners to support and bring growth to the D2N2 LEP area through the development of employment and skills in local construction businesses.

Who we are

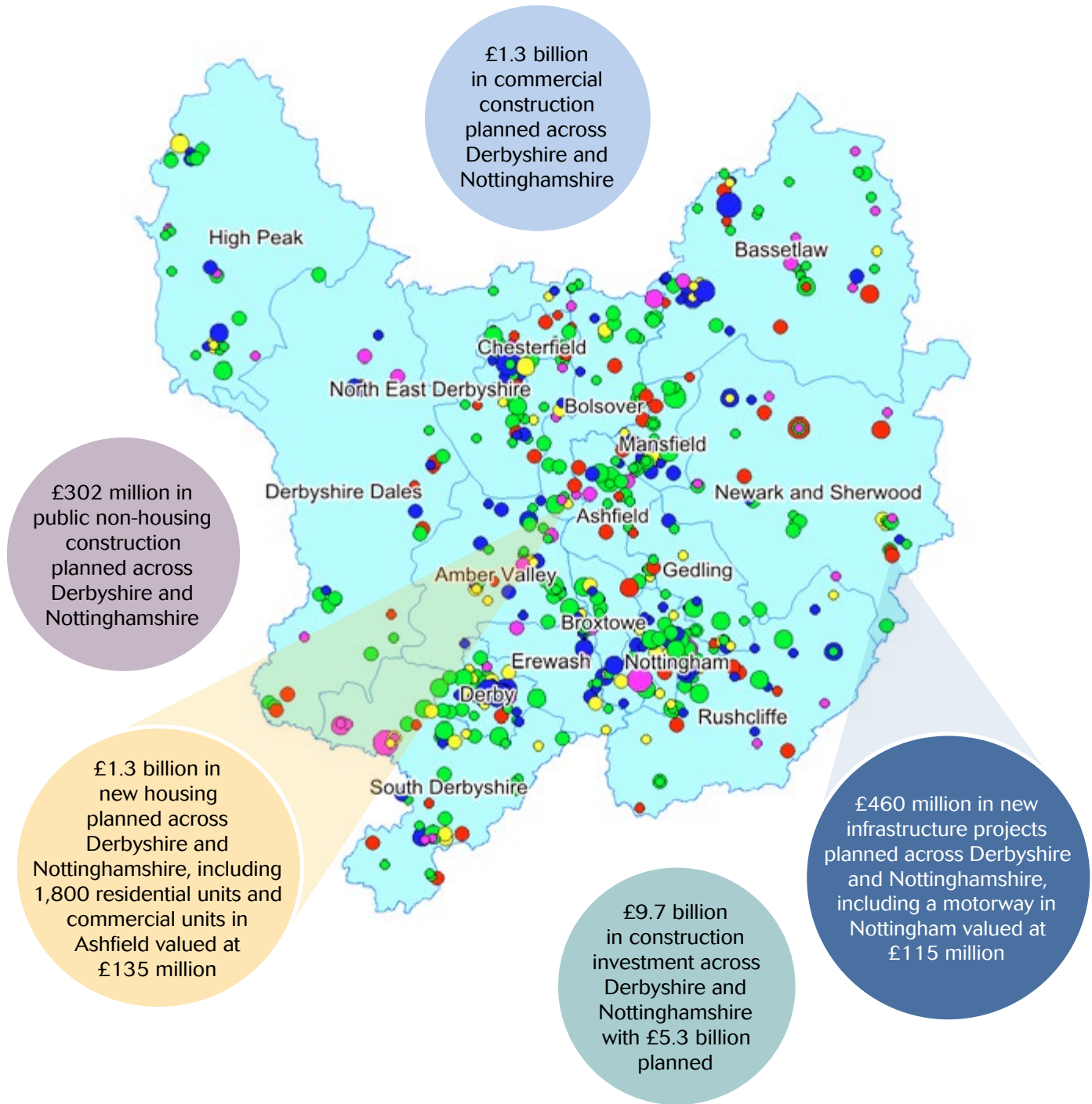
CITB is the Construction Industry Training Board. We work with the construction industry to reduce skills gaps, train the workforce and inspire the next generation of people to work in the industry.



If you want to deliver growth in your area, we can help, contact Lorraine Gregory, Partnership Manager on **07500 105703** or **lorraine.gregory@citb.co.uk**



In the D2N2 LEP area, there are 8,635 construction businesses and 71,400 construction jobs.



Planned projects by sector

- Infrastructure
- Private commercial
- Private non-housing
- New housing
- Private industrial

Planned projects by value (£ million)

- >100
- 50 to 100
- 10 to 50
- 2 to 10
- <2

Joint Investment Strategy Nottingham

“Our partnership with CITB demonstrates a commitment to create jobs, Apprenticeships and training opportunities.”

CITB and Nottingham City Council committed to supporting the delivery of three projects as part of a Joint Investment Strategy in May 2015.

The strategy was designed with active input from local construction employers and stakeholders. The aim was to address skills gaps and create unique employment and skills opportunities in the area.

The three projects under the investment strategy were:

- *Growth through people*
- *Growth through business*
- *Growth through enablers.*

One of the businesses helped by CITB and the council's strategy was 'Nottingham Maintenance', a domestic and commercial business established in 2009 with the help of start-up support from The Prince's Trust.

Jon Johnson, Owner and Director of Nottingham Maintenance, says he was keen to develop his business. He worked with CITB and Nottingham City Council to access business support and guidance. Senior staff at Jon's business took advantage of four fully funded leadership and management courses. They also utilised the free recruitment service.

Jon said: “The support arrived just at the right time. We were a small business growing fast and beginning to feel the strain of an increased workload. The leadership and management courses really helped our business move forward and become more efficient. The free recruitment service allowed us to see potential new employees through no-cost work trials.

“One of our employees, Richard Smithurst, joined us in September 2015 after he completed a successful work trial with us. We used the financial allowance towards his salary from Nottingham City Council to pay for further training, which has helped his development and has also increased the skills within our company.”



The Joint Investment Strategy is performing well and is on target to exceed its initial targets by the end of the programme in March 2017. So far the programme has led to:

- *250 unemployed Nottingham City residents receiving construction training and work experience*
- *25 young people not in education, employment or training (NEET) supported into construction traineeships*
- *126 unemployed residents securing a job/Apprenticeship, with 55 individuals achieving 13 weeks' sustained employment to date.*

“Nottingham City Council's partnership with CITB demonstrates our commitment to create more jobs, Apprenticeships, and training opportunities for local people,” said Councillor Nick McDonald, Portfolio Holder for Jobs, Growth and Transport. “We see the Joint Investment Strategy as a significant step towards enabling the public sector to play a leading role in promoting construction and increasing the competitiveness of local businesses.”

Contact

Please contact Lorraine Gregory on 07500 105703 or lorraine.gregory@citb.co.uk to arrange a meeting to discuss how we can work with your LEP or local authority.

Useful links

citb.co.uk
citb.co.uk/csn
citb.co.uk/funding
goconstruct.org

Follow us on

 Twitter
[@CITB_UK](https://twitter.com/CITB_UK)
 Facebook
facebook.com/citb.uk
 LinkedIn
linkedin.com/company/citb