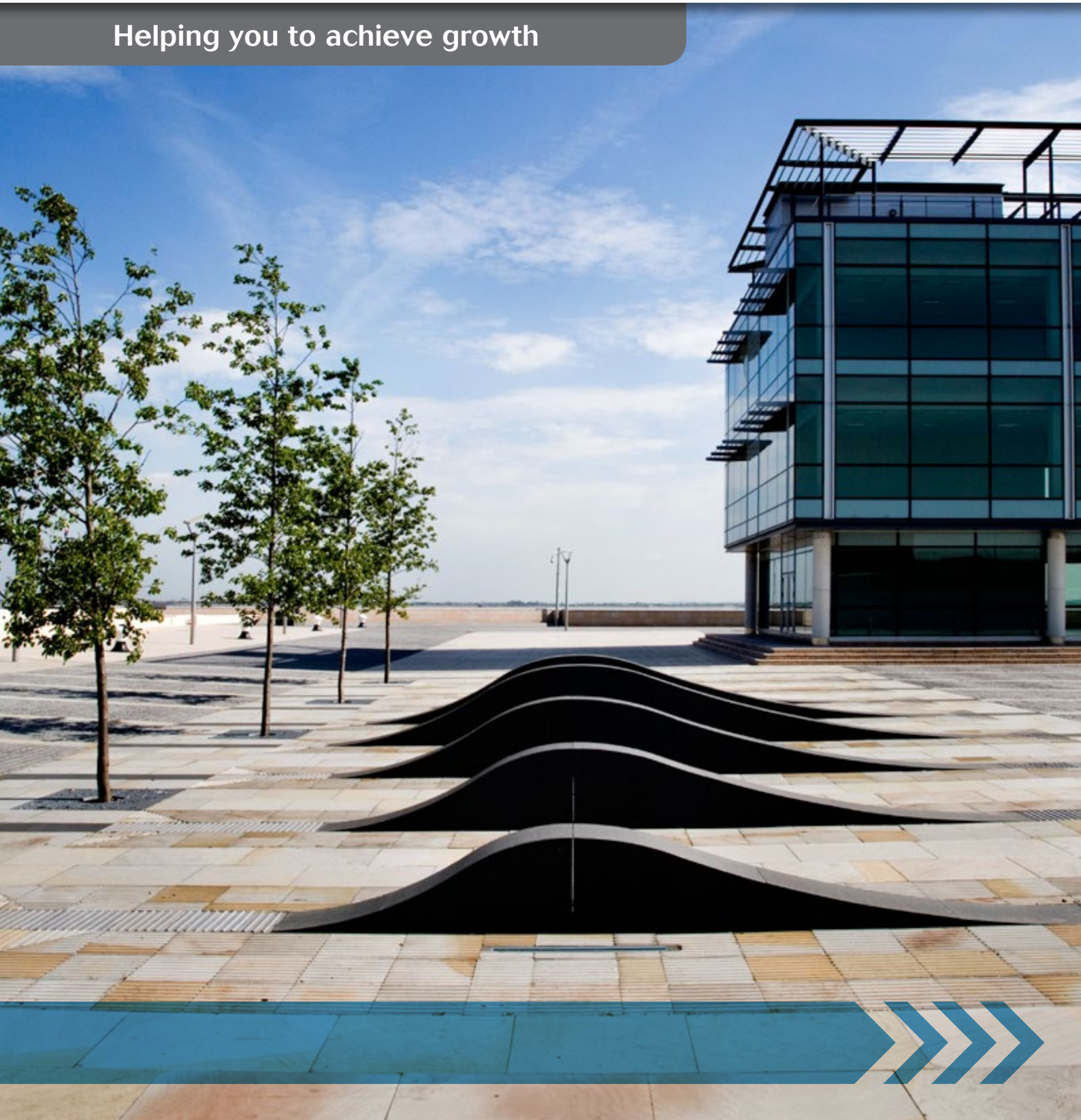


Construction in the Humber LEP area

Helping you to achieve growth



Construction helps you to achieve economic growth

The construction industry accounts for **8% of United Kingdom Gross Domestic Product (GDP)** and has a workforce of **2.6 million**. The industry generates a **return of £2.84** to the economy for every pound of investment.

The role of construction

The construction industry plays a leading role in delivering economic growth. The industry is essential in meeting the economic and social challenges that Local Enterprise Partnerships (LEPs) face across the infrastructure, housing, repair and maintenance, industrial and commercial sectors.

Whether you are working to meet your area's housing needs or to deliver iconic infrastructure, **we can help you to plan and maximise your skills outcomes through construction.**

We want to help you **use construction to drive long-term growth and jobs** across the Humber LEP area and your priority sectors. We work with LEPs and bring together industry to find solutions to address the current and future skills needs of construction businesses in the LEP area.

With the economy now strong and continuing to grow, the UK construction industry needs to attract 43,000 new recruits every year for the next five years to meet the increased demand for skills and to replace those leaving the sector. We will continue to work with your LEP and local partners to support and bring growth to the Humber LEP area through the development of employment and skills in local construction businesses.

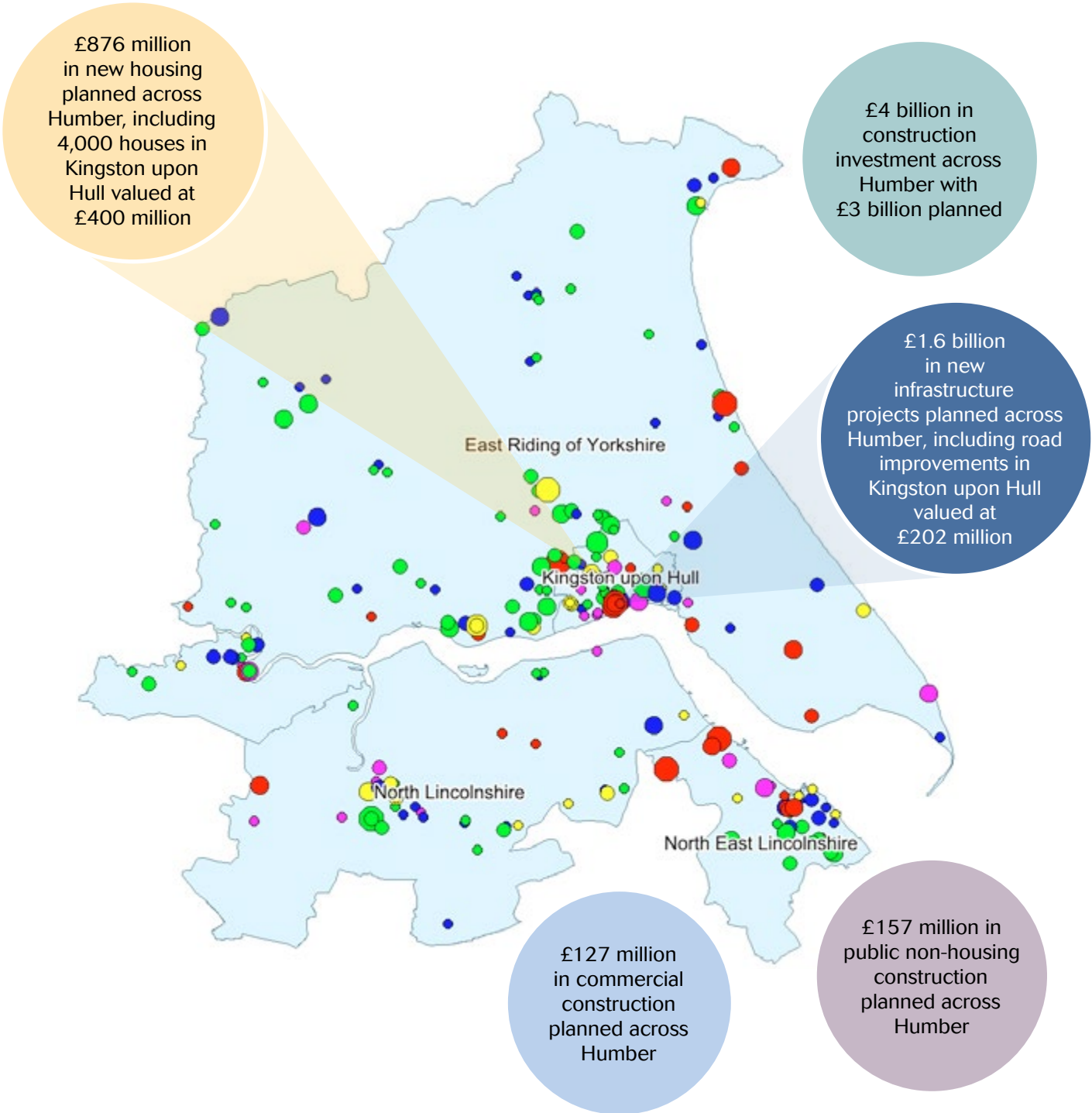
Who we are

CITB is the Construction Industry Training Board. We work with the construction industry to reduce skills gaps, train the workforce and inspire the next generation of people to work in the industry.



If you want to deliver growth in your area, we can help, contact **Jeremy Wright, Partnership Manager** on **07787 697785** or **jeremy.wright@citb.co.uk**

In the Humber LEP area, there are 3,715 construction businesses and 34,800 construction jobs.



Planned projects by sector

- Infrastructure
- Private commercial
- Private non-housing
- New housing
- Private industrial

Planned projects by value (£ million)

- >100
- 50 to 100
- 10 to 50
- 2 to 10
- <2

York has “much to gain from locally targeted employment and training opportunities”

As the second-fastest growing city in the country and one of the most attractive places to live, York has a lot going for it.

The city is also currently gearing up for a significant period of regeneration. There are plans to build up to 22,000 homes in the area during the next 15 years. It's been estimated that York has the potential to create 1,000 construction jobs per year during this period.

The City of York Council has been working with CITB to ensure local construction projects provide opportunities to support local growth. The council is one of the first in the Yorkshire and Humber area to be awarded the National Skills Academy for Construction Client Based Approach (CBA) status. It believes it will create sustainable employment and training opportunities for local businesses through the CBA.

“The CBA has provided us with an industry-approved employment and skills framework to embed our procurement and planning processes,” says Julia Massey, Learning City York Partnership Manager, City of York Council.

“It has been our aim, through the York Skills Strategy, to secure opportunities for local businesses and residents at each stage of this exciting period of structural redevelopment and regeneration for the city.

“With projects ranging from the £40m York Community Stadium sports complex and the remodelling of the iconic Guildhall to large office and housing developments,

we have much to gain in locally targeted employment, training and education opportunities.”

Sarah Fenton, CITB Strategic Partnerships Director, said: “Our partnership work with local authorities and other clients on the CBA will develop unique, sustainable employment and skills opportunities that reflect local priorities.”



Contact

Please contact Jeremy Wright on 07787 697785 or jeremy.wright@citb.co.uk to arrange a meeting to discuss how we can work with your LEP or local authority.

Useful links

citb.co.uk
citb.co.uk/csn
citb.co.uk/funding
goconstruct.org

Follow us on

 Twitter
[@CITB_UK](https://twitter.com/CITB_UK)
 Facebook
facebook.com/citb.uk
 LinkedIn
linkedin.com/company/citb

citb.co.uk

