

Construction in the Birmingham and Solihull LEP area

Helping you to achieve growth



Construction helps you to achieve economic growth

The construction industry accounts for **8% of United Kingdom Gross Domestic Product (GDP)** and has a workforce of **2.6 million**. The industry generates a **return of £2.84** to the economy for every pound of investment.

The role of construction

The construction industry plays a leading role in delivering economic growth. The industry is essential in meeting the economic and social challenges that Local Enterprise Partnerships (LEPs) face across the infrastructure, housing, repair and maintenance, industrial and commercial sectors.

Whether you are working to meet your area's housing needs or to deliver iconic infrastructure, **we can help you to plan and maximise your skills outcomes through construction.**

We want to help you **use construction to drive long-term growth and jobs** across the Birmingham and Solihull LEP area and your priority sectors. We work with LEPs and bring together industry to find solutions to address the current and future skills needs of construction businesses in the LEP area.

With the economy now strong and continuing to grow, the UK construction industry needs to attract 43,000 new recruits every year for the next five years to meet the increased demand for skills and to replace those leaving the sector. We will continue to work with your LEP and local partners to support and bring growth to the Birmingham and Solihull LEP area through the development of employment and skills in local construction businesses.

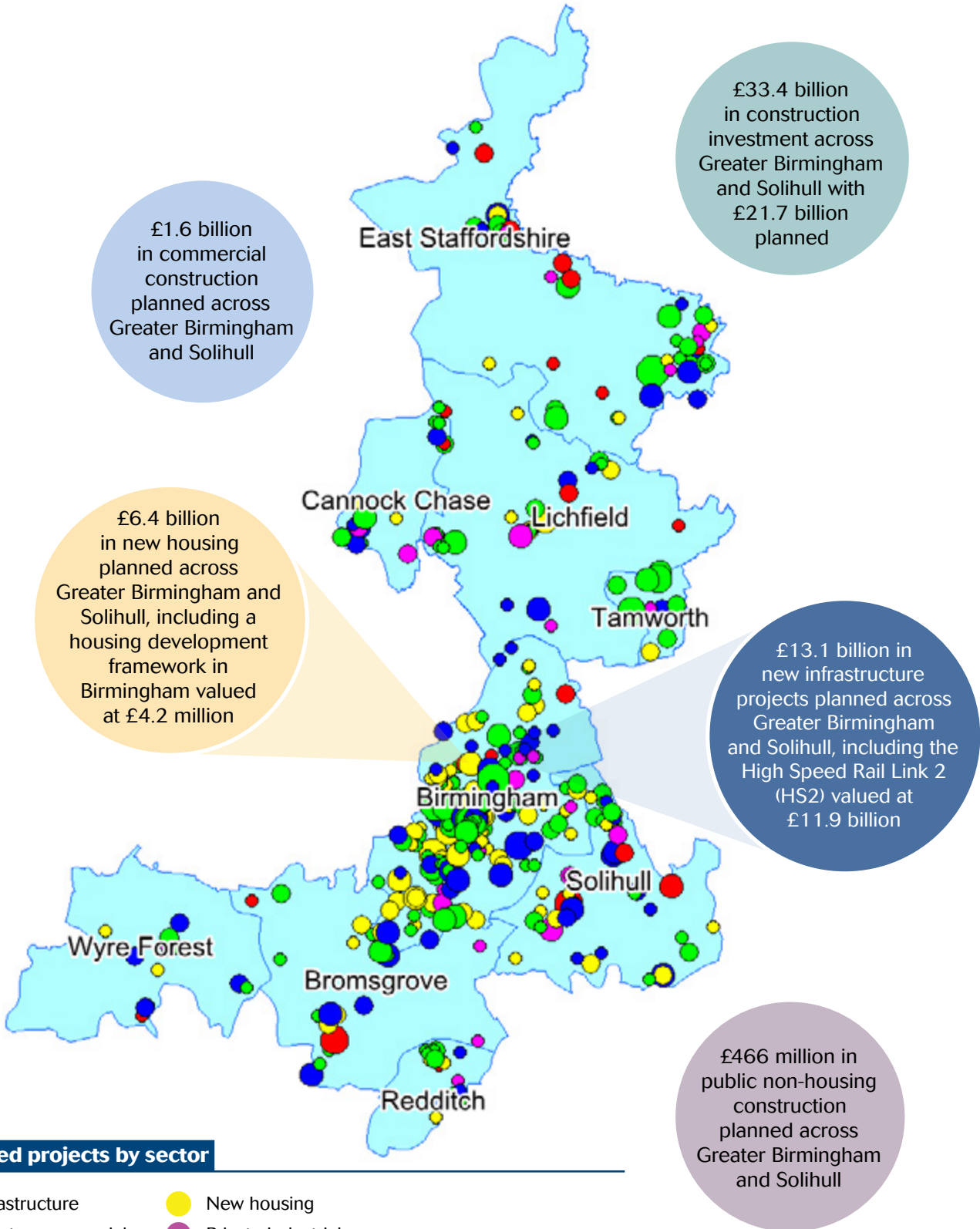
Who we are

CITB is the Construction Industry Training Board. We work with the construction industry to reduce skills gaps, train the workforce and inspire the next generation of people to work in the industry.



If you want to deliver growth in your area, we can help, contact **Lorraine Gregory, Partnership Manager** on **07500 105703** or **lorraine.gregory@citb.co.uk**

In the Birmingham and Solihull LEP area, there are 7,080 construction businesses and 45,400 construction jobs.



Planned projects by sector

- Infrastructure
- Private commercial
- Private non-housing
- New housing
- Private industrial

Planned projects by value (£ million)

- >100
- 50 to 100
- 10 to 50
- 2 to 10
- <2

City of Birmingham Council working with CITB to address skill gaps

A strategy setting out the construction skills needs of employers in Greater Birmingham and Solihull has been devised by CITB and the City of Birmingham Council.

The strategy was designed with active input from local construction employers and stakeholders. The aim was to address skills gaps and create unique employment and skills opportunities in the area.

The three projects under the investment strategy were:

- *Growth through People*
- *Growth through Business*
- *Growth through Enablers.*

These were designed to support future growth in the construction industry during 2015–2016 by:

- *Supporting the development of appropriate skills to address future skills needs*
- *Providing opportunities for individuals to experience the industry*
- *Increasing achievement of skills, employment and Apprenticeships outcomes through the city council's adoption of CITB's Client Based Approach (guidance to ensure construction projects provide local employment and skills opportunities and construction growth).*

The strategy defines how construction projects can be co-funded and delivered in partnership. It uses CITB's Labour Forecasting Tool to gauge factors impacting on local construction employment and skills.

The strategy made suggestions for the future by:

- *Analysing the 'demand pipeline' in the area to understand how employment and training opportunities can be maximised*
- *Conducting analysis into current supply including the existing workforce and provision supplied by local colleges*
- *Looking at how new entrants join the construction industry*
- *Assessing if existing construction training provision in the area is fit for purpose*

- *Evaluating the benefits of investing in local young people*
- *Making suggestions about how the evidence above might be used to gain investment funding.*

All the available research data will contribute to a conclusive construction strategy, with vital information on demand, supply, skills and people gaps and area provision.

The strategy will make a real difference to residents and businesses within the Greater Birmingham and Solihull area and will feed into the range of construction projects coming on stream around Greater Birmingham now and in the years to come.



Contact

Please contact Lorraine Gregory on 07500 105703 or lorraine.gregory@citb.co.uk to arrange a meeting to discuss how we can work with your LEP or local authority.

Useful links

citb.co.uk
citb.co.uk/csn
citb.co.uk/funding
goconstruct.org

Follow us on

 Twitter
[@CITB_UK](https://twitter.com/CITB_UK)
 Facebook
facebook.com/citb.uk
 LinkedIn
linkedin.com/company/citb