

Construction in the Cornwall and Isles of Scilly LEP area

Helping you to achieve growth



Construction helps you to achieve economic growth

The construction industry accounts for **8% of United Kingdom Gross Domestic Product (GDP)** and has a workforce of **2.6 million**. The industry generates a **return of £2.84** to the economy for every pound of investment.

The role of construction

The construction industry plays a leading role in delivering economic growth. The industry is essential in meeting the economic and social challenges that Local Enterprise Partnerships (LEPs) face across the infrastructure, housing, repair and maintenance, industrial and commercial sectors.

Whether you are working to meet your area's housing needs or to deliver iconic infrastructure, **we can help you to plan and maximise your skills outcomes through construction.**



We want to help you **use construction to drive long-term growth and jobs** across the Cornwall and Isles of Scilly LEP area and your priority sectors. We work with LEPs and bring together industry to find solutions to address the current and future skills needs of construction businesses in the LEP area.

With the economy now strong and continuing to grow, the UK construction industry needs to attract 43,000 new recruits every year for the next five years to meet the increased demand for skills and to replace those leaving the sector. We will continue to work with your LEP and local partners to support and bring growth to the Cornwall and Isles of Scilly LEP area through the development of employment and skills in local construction businesses.

Who we are

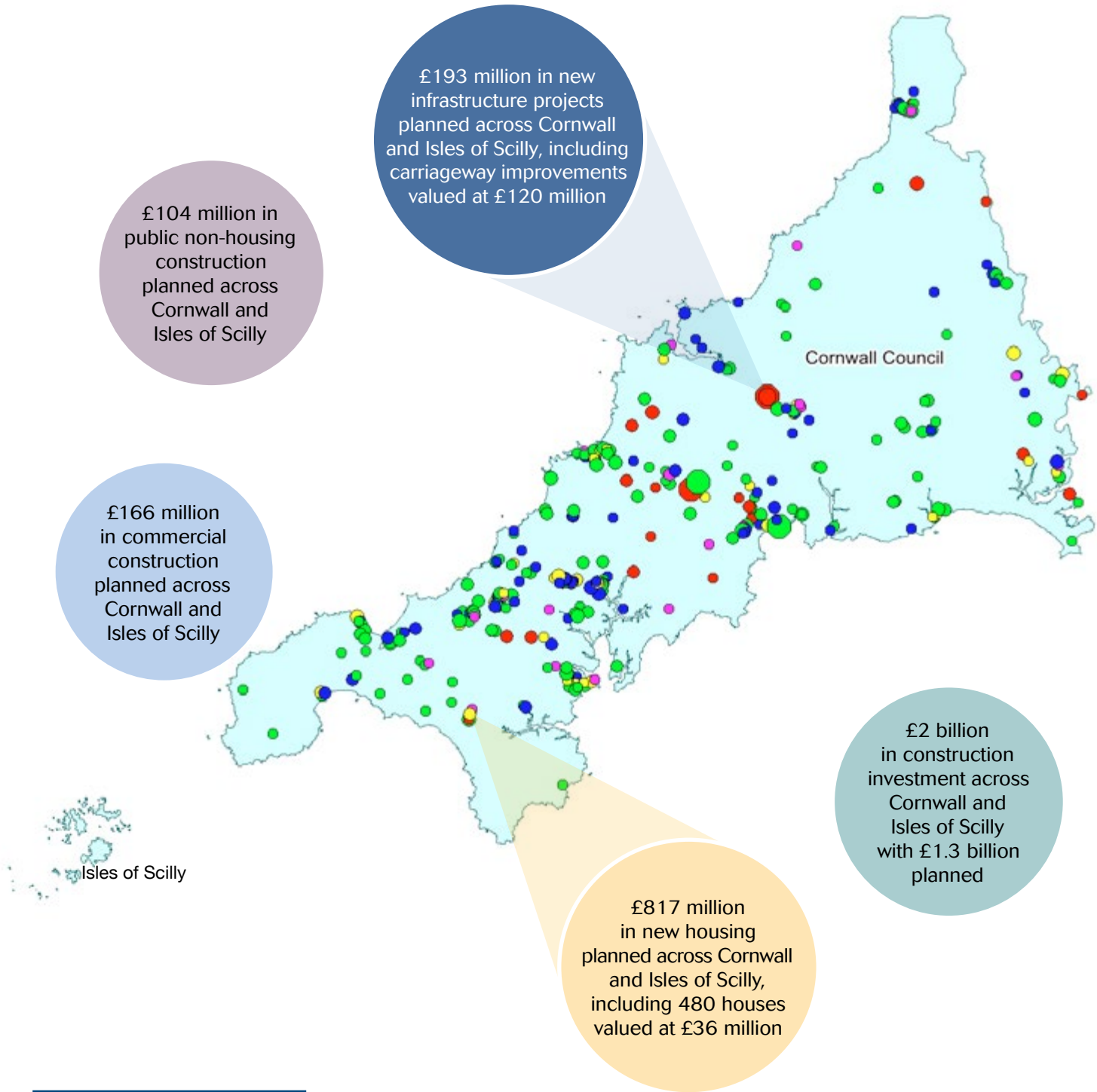
CITB is the Construction Industry Training Board. We work with the construction industry to reduce skills gaps, train the workforce and inspire the next generation of people to work in the industry.



If you want to deliver growth in your area, we can help, contact **Leif Tarry, Partnership Manager** on **07554 416579** or **leif.tarry@citb.co.uk**



In the Cornwall and Isles of Scilly LEP area, there are 2,930 construction businesses and 29,400 construction jobs.



Planned projects by sector

- Infrastructure
- Private commercial
- Private non-housing
- New housing
- Private industrial

Planned projects by value (£ million)

- >100
- 50 to 100
- 10 to 50
- 2 to 10
- <2

Cornwall Council

Cornwall Council embraces CITB's Client Based Approach to "drive, incentivise and co-ordinate skills training delivery."

Cornwall Council became the first local authority in the south west to be awarded National Skills Academy for Construction (NSAfC) status in 2013.

The award was for the council's commitment to working with contractors to create Apprenticeships, training and work placements for local people.

Following the award, the council's property services department entered into a Capital Works Delivery Framework, a long-term partnership agreement with local contractors and public sector partners.

Partners in the agreement included: Cornwall College, Plymouth City Council, CITB, training providers and employment agencies. The collective aim of the partners was to drive and co-ordinate the delivery of Apprenticeship, employment and training through its construction activity.

To assist the council with its construction and Apprenticeship aims the CITB developed end-to-end guidance known as the Client Based Approach (CBA).

In a nutshell, the approach is guidance to ensure construction projects provide employment and skills opportunities and construction growth.

It enabled the council to obtain additional social and economic benefits from its capital spend programmes. These included:

- *Creating a trained, sustainable workforce to deliver construction projects and encourage companies to move into the area*
- *Creating Apprenticeship, employment and skills opportunities to boost workforce skills*
- *Providing opportunities to place teenage students on work experience, encouraging them to seek employment in the construction sector.*

This programme was developed into a NSAfC Employment and Skills Plan (ESP) with the support of CITB. It was approved by the National Construction Skills Academy Group – an industry led alliance made up of major employers and clients such as BAM Nuttall, Carillion and Laing O'Rourke.

"The council and its partners are responsible for delivering a large number of major building projects across Cornwall," said Laurence Jenkin, Programme Commissioning Officer, Capital Projects, Cornwall Council.

"The aim of the agreement is to ensure that we use this spending in a positive way to provide local people with skills and employment opportunities.

"As a result of the success of the previous framework the council has recently agreed to procure a new framework. This is expected to be in place by Autumn 2016. The new framework will, again, embrace the CITB CBA in order to drive, incentivise and co-ordinate the delivery of training through its construction activity.

"The council recognises that the framework approach has allowed contractors to be motivated and empowered to deliver social benefits in Cornwall and to absorb costs through increased profitability and growth.

"We will again be working with local partners, colleges and other public sector organisations to maximise the benefits and help plan and coordinate activity in the sector."



Contact

Please contact Leif Tarry on 07554 416579 or leif.tarry@citb.co.uk to arrange a meeting to discuss how we can work with your LEP or local authority.

Useful links

citb.co.uk
citb.co.uk/csn
citb.co.uk/funding
goconstruct.org

Follow us on

 Twitter
[@CITB_UK](https://twitter.com/CITB_UK)
 Facebook
facebook.com/citb.uk
 LinkedIn
linkedin.com/company/citb