

2016

citb.co.uk



Construction in the Cheshire and Warrington LEP area

Helping you to achieve growth



Construction helps you to achieve economic growth

The construction industry accounts for **8% of United Kingdom Gross Domestic Product (GDP)** and has a workforce of **2.6 million**. The industry generates a **return of £2.84** to the economy for every pound of investment.

The role of construction

The construction industry plays a leading role in delivering economic growth. The industry is essential in meeting the economic and social challenges that Local Enterprise Partnerships (LEPs) face across the infrastructure, housing, repair and maintenance, industrial and commercial sectors.

Whether you are working to meet your area's housing needs or to deliver iconic infrastructure, **we can help you to plan and maximise your skills outcomes through construction.**



We want to help you **use construction to drive long-term growth and jobs** across the Cheshire and Warrington LEP area and your priority sectors. We work with LEPs and bring together industry to find solutions to address the current and future skills needs of construction businesses in the LEP area.

With the economy now strong and continuing to grow, the UK construction industry needs to attract 43,000 new recruits every year for the next five years to meet the increased demand for skills and to replace those leaving the sector. We will continue to work with your LEP and local partners to support and bring growth to the Cheshire and Warrington LEP area through the development of employment and skills in local construction businesses.

Who we are

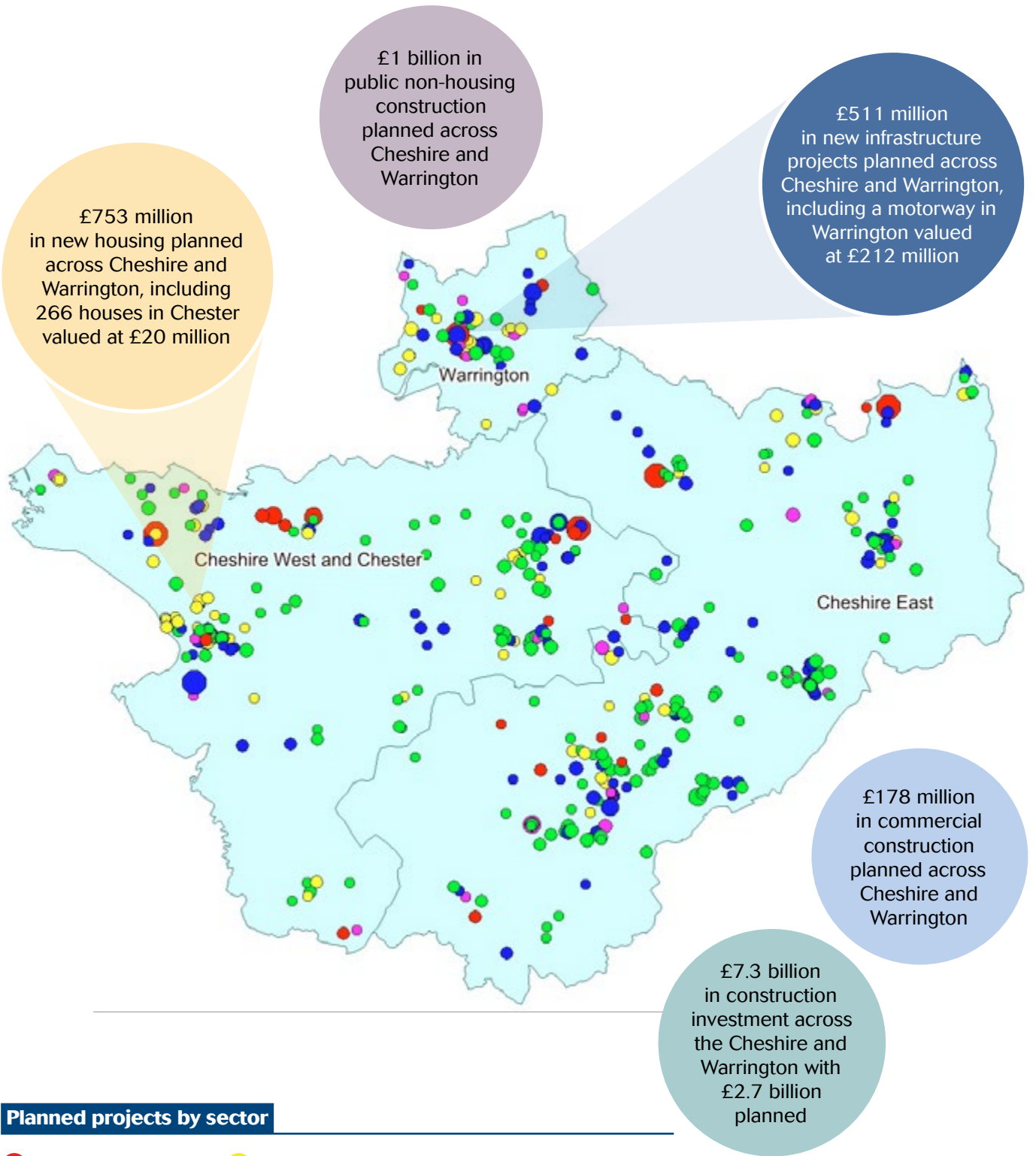
CITB is the Construction Industry Training Board. We work with the construction industry to reduce skills gaps, train the workforce and inspire the next generation of people to work in the industry.



If you want to deliver growth in your area, we can help, contact Sarah Fenton, Strategic Partnership Director (North) on **07786 687212** or **sarah.fenton@citb.co.uk**



In the Cheshire and Warrington LEP area, there are 3,620 construction businesses and 25,200 construction jobs.



Planned projects by sector

- Infrastructure
- Private commercial
- Private non-housing
- New housing
- Private industrial

Planned projects by value (£ million)

- >100
- 50 to 100
- 10 to 50
- 2 to 10
- <2

“By working with CITB we can ensure employment opportunities are offered to local people”

Stockport Metropolitan Borough Council was one of the first local authorities in north-west England to be awarded National Skills Academy for Construction (NSAfC) status.

The NSAfC is a project-based training concept that helps clients and contractors get the right skills where they need them – on site. It's a demand-led training model that means the client and contractor determine the required skills. Specific targets and requirements are developed at project level so training fits the needs of each project.

The principles of the NSAfC, which is led by CITB, have become incorporated into the council's procurement and planning policy for major construction projects in the borough.

Council Growth Manager and NSAfC Client Co-ordinator, Nick Hill, said: “The way in which CITB developed guidance and a supporting toolkit meant it was logical for the council to see how the NSAfC adds value to its economic priorities and strategic objectives.

“The NSAfC also links with the Social Value Act 2012, which will help us measure how it is performing in meeting this statutory requirement.”

As part of the NSAfC the council will adopt the Client Based Approach (CBA) guidance to ensure construction projects provide local employment, skills opportunities and growth. The CBA will create work placements, job opportunities and new Apprenticeships for young people not in education, employment, or training (NEETs) and unemployed adults. It will also boost the local economy by improving the construction supply chain and upskilling the workforce to ensure it is ready to meet the industry's future challenges.

Nick added: “The council recognises that construction projects help other

sectors and industries grow and thrive. By working in partnership with CITB and a range of other stakeholders we can ensure that the employment and skills opportunities created by construction projects are offered to local people.”

Sarah Fenton, CITB Strategic Partnerships Director, echoed this view. “Our partnership work with local authorities and other clients on the CBA will develop sustainable and unique employment and skills opportunities that reflect local priorities.”



Contact

Please contact Sarah Fenton on 07786 687212 or sarah.fenton@citb.co.uk to arrange a meeting to discuss how we can work with your LEP or local authority.

Useful links

citb.co.uk
citb.co.uk/csn
citb.co.uk/funding
goconstruct.org

Follow us on

 Twitter
[@CITB_UK](https://twitter.com/CITB_UK)
 Facebook
facebook.com/citb.uk
 LinkedIn
linkedin.com/company/citb

citb.co.uk

